

**New Bedford Yacht Club
WHALER'S RACE
NOTICE OF RACE
September 15, 2012**

The traditional 105 nautical mile category 3 New Bedford Yacht Club Whalers' Race dates back to 1932.

The race starts and finishes at Padanaram and includes marks at Cuttyhunk, Noman's, Block Island and the Buzzards Bay Tower.

All points of sailing are involved.

With the 0830 start, this can be a one (1) day event.

New Bedford Yacht Club's hospitality and the challenging and interesting course make this a very enjoyable event.

Frank Vining Smith Trophy - Spinnaker Class

2009 – *Kinship* - J. Thomas Selldorff

2010 – *Shindig* – Arthur Burke, M.D.

2111 - *Shindig* - Arthur Burke, M.D.

R. Eugene Ashley Memorial Trophy - Non-spinnaker Class

2009 – *Calusa* – Peter Holmes

2010 – Not Awarded

2111 - *Kinsale* - Alan Eddy

Narada Challenge Cup - Double-handed Class

2009 – Not Awarded

2010 – *Albert Signorella, M.D.*

2111 - *Spinnaker* - *Albert Signorella, M.D.*

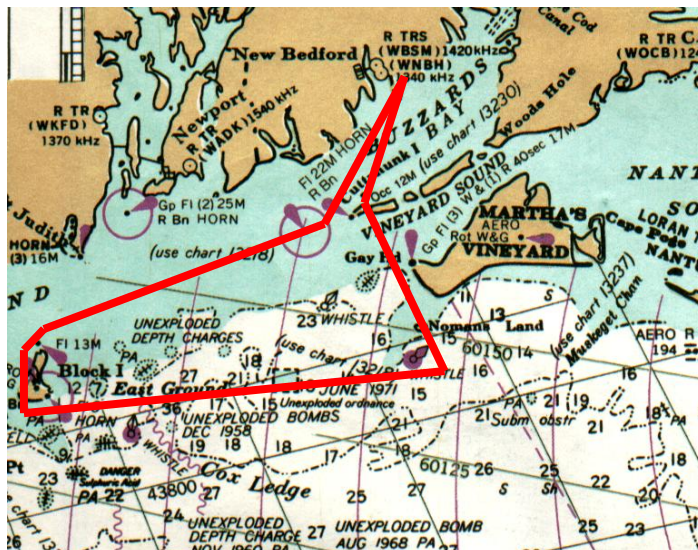
Nonspinnaker - *Whistler* - *Fred Schmidt*

Multihull

2009 – *Swamp Fox* – Donald Watson

2010 – *Swamp Fox* – Donald Watson

2011 - *Swamp Fox* - Donald Watson



New Bedford Yacht Club
WHALERS' RACE
September 15, 2012
NOTICE OF RACE

- 1. RULES:** The race will be governed by the Racing Rules of Sailing (RRS), the By-laws of PHRF-New England, this Notice of Race (except as any of these are altered by the Sailing Instructions) and the Sailing Instructions.
- 2. CLASSES AND DIVISIONS:**
PHRF Classes:

Monohull	Spinnaker & Non-spinnaker, Doublehanded Spinnaker & Non-spinnaker
Multihulls	Crewed
- 3. ELIGIBILITY:** The regatta is open to all yachts with length overall of 24 feet or more whose owner is a current member of the PHRF-NE fleet with a valid handicap certificate issued by PHRF New England or NEMA certificate issued by the New England Multihulls Association.
- 4. EQUIPMENT:** All yachts must meet the requirements of the ORC Special Regs., Governing Minimum Equipment and Accommodation Standards, Category 3.
- 5. ENTRY:** A completed entry form along with a current PHRF-NE certificate must be submitted to the NBYC office by Friday, September 14, 2012. Entry fee: \$70.00. Entry forms are available by calling the NBYC office at (508) 997-0762 or at www.nbyc.com/racing . Moorings will be available before and after race at no charge.
- 6. SCHEDULE OF RACES:** This race will be a 105 nautical mile race around Block Island. The starting sequence will be in accordance to the International Yacht Racing Rule 26. The following starting sequence will be utilized:

First gun at 0830 hours. The start sequences will be handed out along with scratch sheets at the skippers' meeting. The starting line will be between "AB" located approximately two miles southeast of the Padanaram breakwater and the orange flag on the Committee Boat. Yachts are requested to stand clear of the starting area until after the start of the preceding class.
- 7. TIME LIMIT:** The time limit will be 1400 hours on Sunday, September 16, 2012.
- 8. SKIPPER'S MEETING:** There will be a skipper's meeting at 1900 hours at NBYC on Friday, September 14, 2012 in the Rothschild Room. The NBYC Dining Room will be open for dining until 9:00pm.
- 9. SAILING INSTRUCTIONS:**
The Official Sailing Instructions will be available at the skipper's meeting.

10. COURSES AND SAILING AREA:

FOR ALL YACHTS -

- Start - AB and Committee Boat
- R36 - Sow and Pigs Reef leave to port
- R2 - Noman's Land leave to starboard
- R 4, Block Island leave to starboard
- Green 1BI - Block Island leave to starboard
- Buzzards Bay Tower leave to port
- R 4 - Sandspit leave to port
- Finish: All yachts to take their own time (GPS time) when the NBYC Mark A bears 050° at a distance of 75 yards or less.

11. TROPHIES: Trophies will be awarded for 1st and 2nd place in each class. This will take place in the Rothschild Room on Sunday, September 16th at 1000 hours. Perpetual trophies will be awarded at the annual Race Committee Awards and Dinner scheduled for Friday, October 19, 2012.

12. SCORING:

The Low-Point Scoring System of RRS Appendix A will apply.

13. SOCIAL ACTIVITIES: Dinner will be available on Friday evening after the meeting. On Saturday evening, from 2200 hours through Sunday 1000 hours, a continental breakfast will be available for all competitors in the Rothschild Room.

New Bedford Yacht Club
WHALERS' RACE - SEPTEMBER 15, 2012
Entry Form

SAIL NUMBER YACHT NAME SKIPPER RATING

_____!_____!_____!

Each entrant MUST have sail numbers on her sail.

SKIPPER'S NAME _____

SKIPPER'S ADDRESS _____

CITY _____ STATE _____ ZIP _____

EMAIL: _____

TELEPHONE: HOME (____) _____ CELL PHONE(____) _____

CLUB AFFILIATION _____ YACHT TYPE _____

OWNER'S NAME (if not skipper) _____

OWNER'S ADDRESS (if not skipper) _____

Current **PHRF** Rating _____ Current NEMA Rating _____

Number in Crew including Skipper _____

Class Entered: Monohull _____ Racing _____ Cruising _____
 Doublehanded _____ Racing _____ Cruising _____
 Multihull _____

DEADLINE for registration: Friday, September 14, 2012

Each entry MUST be accompanied by: Current PHRF-NE Certificate or NEMA Certificate

Entry Fee: \$70.00 U.S. Sailing members \$80.00 for non-U.S. Sailing members

Please make checks payable to New Bedford Yacht Club, Inc.

and mail to: New Bedford Yacht Club

 P.O. Box P-4

 South Dartmouth MA 02748-0301

For further information call (508)997-0762.

Release: In consideration of the acceptance of my application in the above event and with an understanding that there are risks inherent in sailboat racing, I do for myself, my personal representative, family, heirs, and assigns waive all claims against and release and discharge New Bedford Yacht Club, their respective officers, directors, agents, members, employees, servants and race committee personnel, from any and all claims, demands, liability, causes of action arising out of the participation of the above vessel in the above event. Further, I hereby represent and warrant that the above vessel in the above event will be outfitted, crewed, equipped and handled in such fashion as to be safe and seaworthy, that the above vessel will have all necessary equipment on board and that it will be competently manned and skippered. I further acknowledge that the responsibility for operation of the above vessel, including but not limited to the decision as to whether to race, rests solely, exclusively and finally with the owner and skipper. I further warrant and represent that I have the authority to make the above commitments on behalf of the owner of the vessel. **Retirement:** Should I retire from a race, I understand that prompt notification of the Race Committee or host Club is mandatory.

OWNER'S SIGNATURE _____ DATE _____